

STARTING AT \$1,595,000*



Kashmere

MCKINLEY BEACH

**LAKE VIEW STANDARDS: NORTH-TO-WEST PANORAMAS,
EVERY SINGLE DAY.**

Contact Sandra | 250.317.3445 | sandra@mckinleybeach.ca

VIRTUAL STAGING: These marketing design drawings are inherently conceptual in nature and are subject to changes and revisions through permitting and construction.

*GST Included



Kashmere

M C K I N L E Y B E A C H

Architectural lakeview homes designed for buyers seeking modern luxury, dramatic views, and immediate access to the McKinley Beach lifestyle.

**TWO COMPLETED HOMES
READY FOR JUNE
OCCUPANCY**

Kashmere at McKinley Beach currently features two completed homes ready for immediate possession.

These architectural residences range from approximately 2,159 to 2,512 sq. ft. and showcase soaring ceilings, dramatic window walls, premium finishes, and expansive outdoor living spaces overlooking Okanagan Lake.



kashmere

3707 MCKINLEY BEACH DRIVE
3711 MCKINLEY BEACH DRIVE

————— Starting at \$1,595,000

————— Starting at \$1,645,000



This thoughtfully designed home offers a layout that balances open living with practical everyday function.

The main living space is centered around natural light and views, with floor-to-ceiling windows, vaulted ceilings, and an open-concept kitchen featuring quartz countertops, premium cabinetry, and a large island for gathering.

The living area connects seamlessly to the outdoor deck, creating an easy transition for entertaining or relaxing while taking in the lake views and sunsets.

The primary bedroom is designed as a private retreat, with a well-appointed ensuite and direct access to outdoor space.

With high-quality finishes throughout, generous natural light, and a layout that works for both quiet living and hosting, this home delivers a strong sense of space and comfort in one of McKinley Beach's most sought-after neighbourhoods.

3707 MCKINLEY BEACH DRIVE \$1,595,000*
3711 MCKINLEY BEACH DRIVE \$1,645,000*

PROPERTY OVERVIEW

Kashmere at McKinley Beach offers a limited collection of single-family homes in the Hillside neighbourhood, designed around light, space, and lake views. This home is positioned to capture west-facing sunsets, with a layout that prioritizes open living and connection to the outdoors. Located just a short walk to Our Place amenity centre, trails, and community amenities.

HOME FEATURES:

- 3 Bedrooms
- Approx. 2,159–2,512 sq ft
- Expansive lake views with west-facing orientation
- Room for a pool
- Large outdoor deck, hot tub ready
- No strata (freehold ownership)



kashmere

3707 MCKINLEY BEACH DRIVE
3711 MCKINLEY BEACH DRIVE

————— **Starting at \$1,595,000**
Starting at \$1,645,000



Experience the pinnacle of hillside luxury at Kashmere at McKinley Beach. This modern masterpiece captures breathtaking west views of Okanagan Lake and the Okanagan Valley. The main level features an open-concept living area and a primary bedroom designed for seamless indoor-outdoor flow.

Designed for both everyday comfort and elevated entertaining, Kashmere homes feature flexible lower-level spaces ideal for media rooms, guest retreats, fitness studios, or wine lounges. The lower patio offers an outdoor fireplace, and patio ready for your hot tub. The large yards are pool ready. Oversized garages provide room for vehicles, outdoor gear, or lake-life essentials.

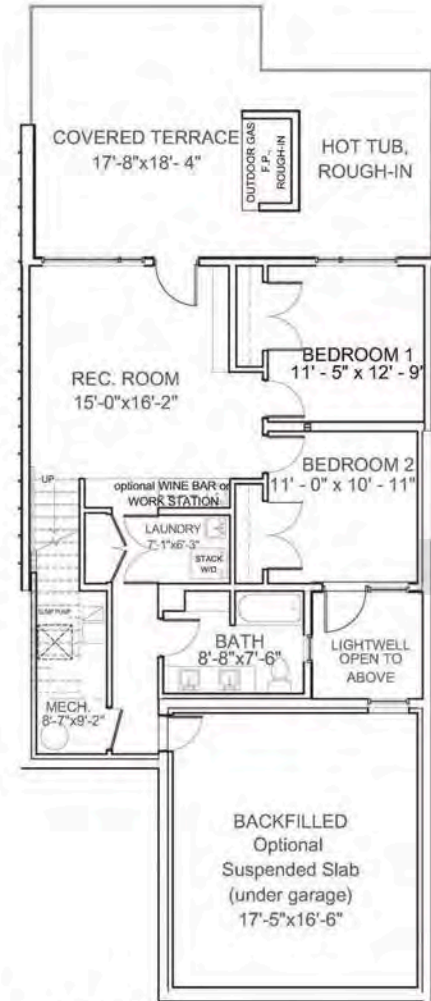
Just moments from the beach, marina, and Our Place amenity centre, Kashmere at McKinley Beach offers a refined Okanagan lifestyle connected to nature, community, and the lake.

Kashmere

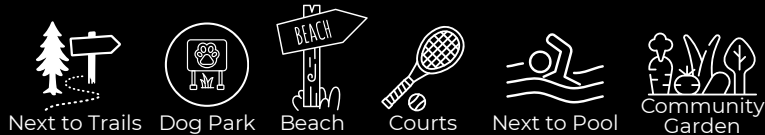
3707 MCKINLEY BEACH DRIVE \$1,595,000*
3711 MCKINLEY BEACH DRIVE \$1,645,000*

THE FLOOR PLAN

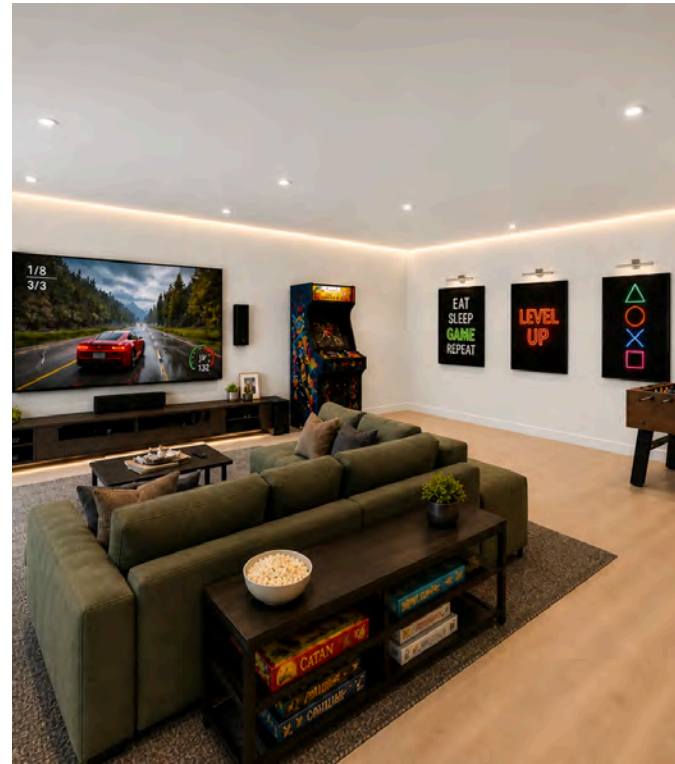
- Open-concept main living area designed around views
- Primary bedroom positioned for privacy and comfort
- Large outdoor deck, ideal for entertaining
- Thoughtful storage throughout the home
- Direct access to outdoor living spaces



COMMUNITY BONUS'



Kasner





EIGHT EXCLUSIVE SINGLE FAMILY HOMES ON MCKINLEY BEACH DRIVE WITH 180° LAKE VIEWS

Street #	Total Area (sq. ft)	Pool Suitable Yard	Interior Colour Pallet	Price
3706	2,159	Yes	Larue (Light)	\$1,595,000
3711	2,512	Yes	Cocoa (Dark)	\$1,645,000

Features include:

- Heated floor in primary ensuite
- Hardwood floors throughout
- EV-ready garage
- Floor-to-ceiling windows with panoramic lake and forest views
- Spacious yards with room for a pool
- Hot tub-ready decks with exterior fireplace
- Designer kitchens with premium appliances
- Elegant bathrooms with high-end finishes
- Thoughtful layouts of living space

Freehold Property - 5% deposit
Summer 2026

Our Sales Centre
Call Sandra 250.317.3445
To Make a Viewing Appointment

Prices does not include PTT

The Developer reserves the right to change prices without notice

This is not an offering for sale. Any such offering may be made only with a disclosure statement.

Prices and specifications are subject to change. E & O.E.